

Cube Lighting, a Garden by Night

seeing the garden in a different light

RHS Hampton Court Palace Flower Show 2011
Garden images

Designer Kari Beardsell

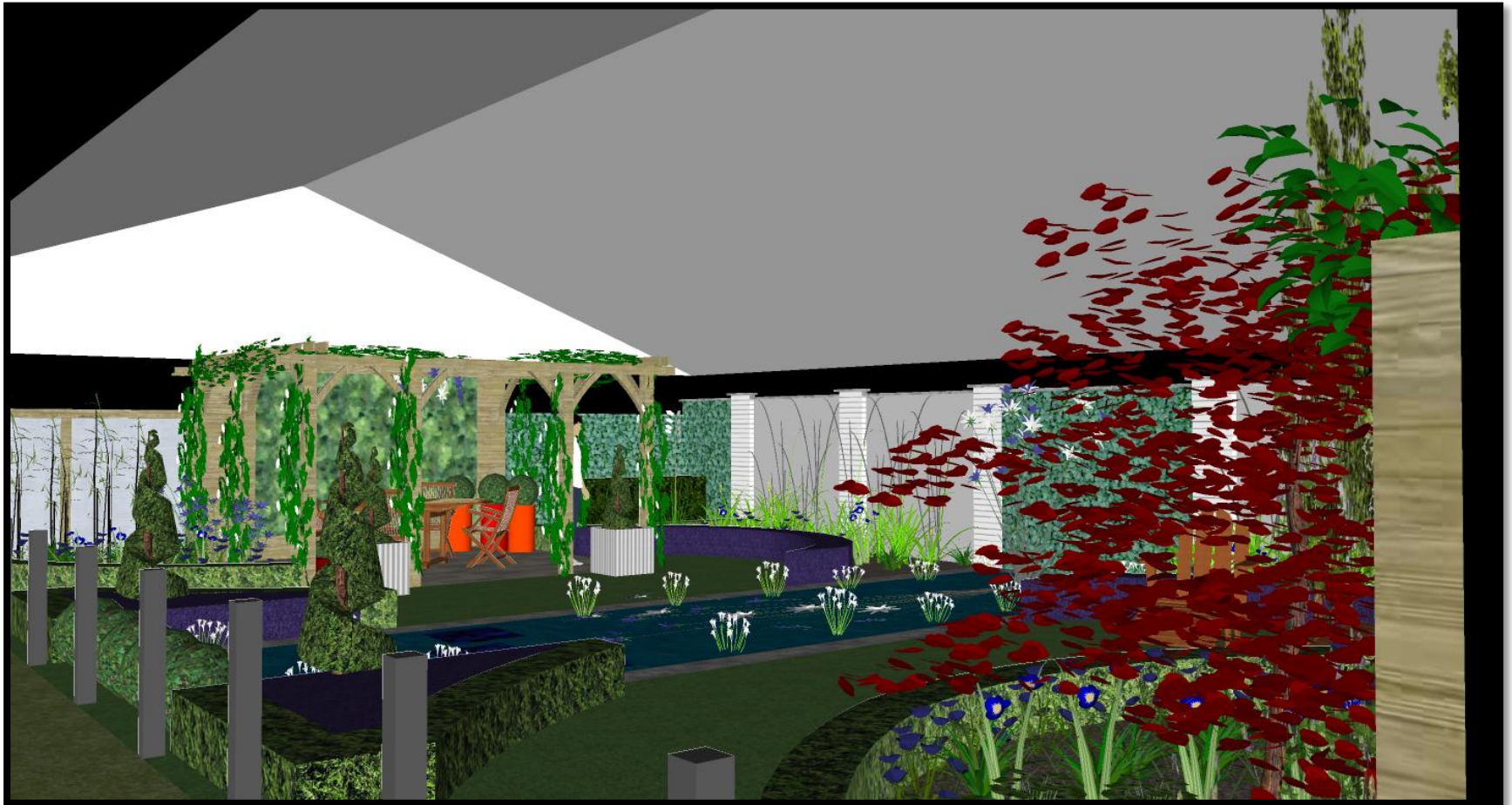


The garden is constructed inside a blacked out marquee, measuring 12x15m. To prevent daylight entering the marquee, two 3x3m blacked out tents are attached for the entrance and exit. The garden has a one way system where the public enter through a covered arch (just visible in this image next to the grey Main Avenue) into the first 3x3 tent. The public walk through the main marquee along a 2 meter wide walkway, viewing the garden and leave through the blacked-out exit tent with the promotional tent attached (seen to the back of this picture). This makes the garden 24m long.



Entering the garden

The ceiling is actually black, but shown here as grey to demonstrate the height



Top view of the garden



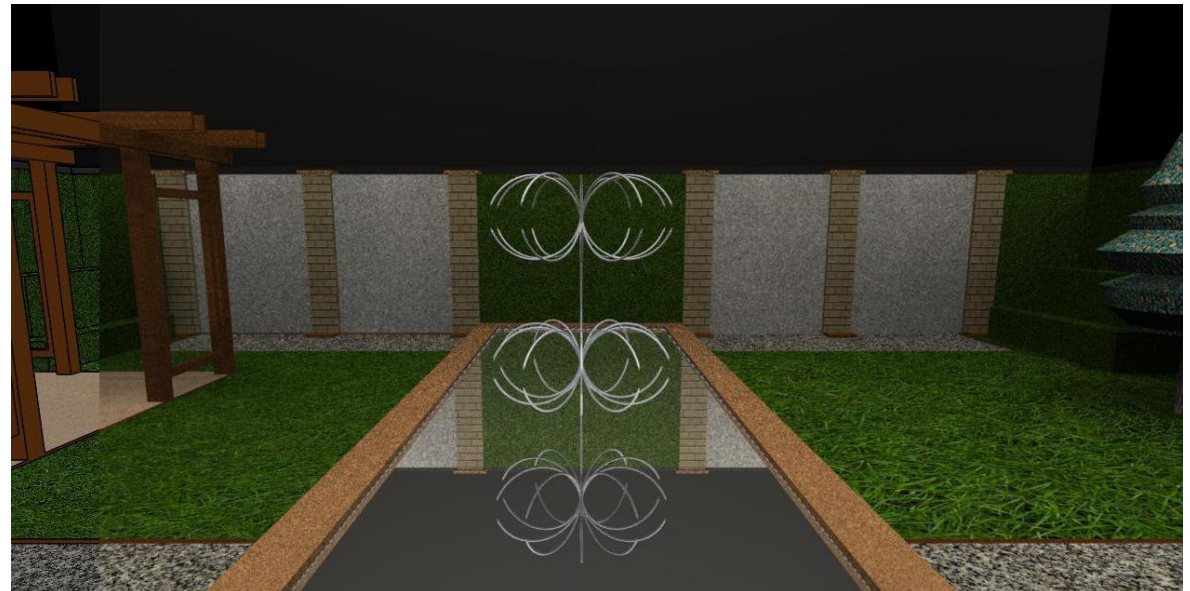
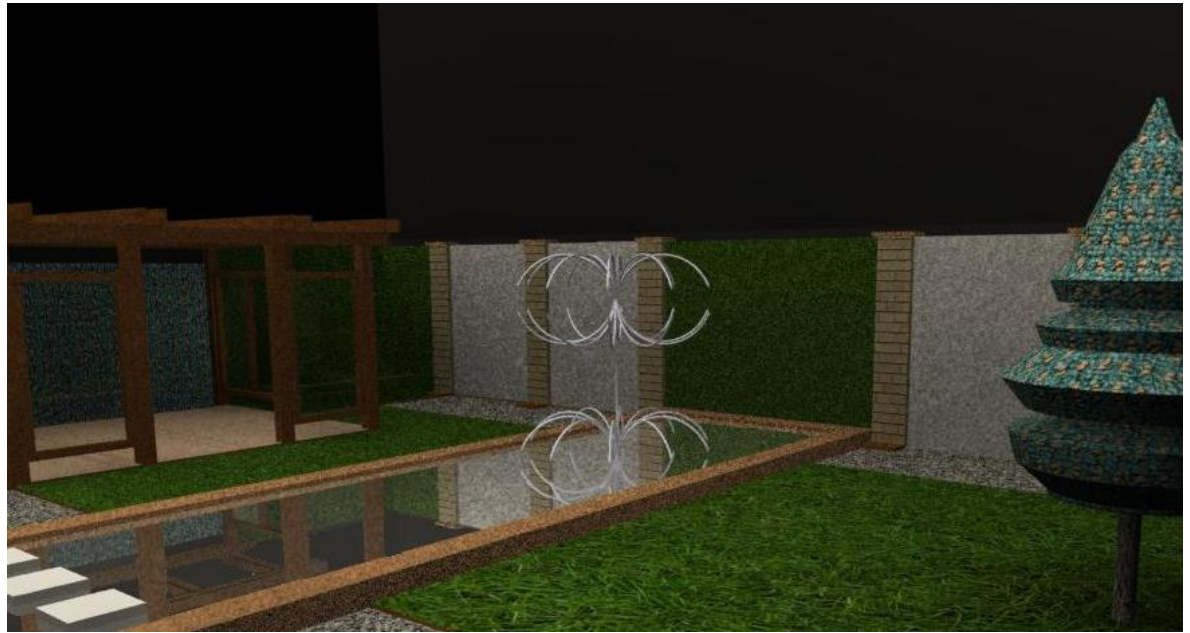
Front view



The reflective pool with illuminated stepping stones



The image in the reflective pool changes as you walk through the garden. By the entrance the reflection of the pergola should be seen and when you approach the end of the pool the crystal weeping willow should sparkle.



A glance back at the garden



Starting to build up the lighting within the garden, indicating some of the lighting effects

